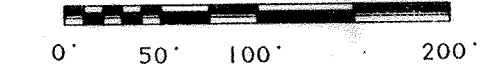


Beacon Hill Subdivision

2nd ADDITION, SECTION 4

AREA "C"

LOCATED IN C. KENDALL M.S. No. 2074
 VILLAGE OF MT. ORAB, PIKE TOWNSHIP, BROWN COUNTY, OHIO
 26 MAY 1998

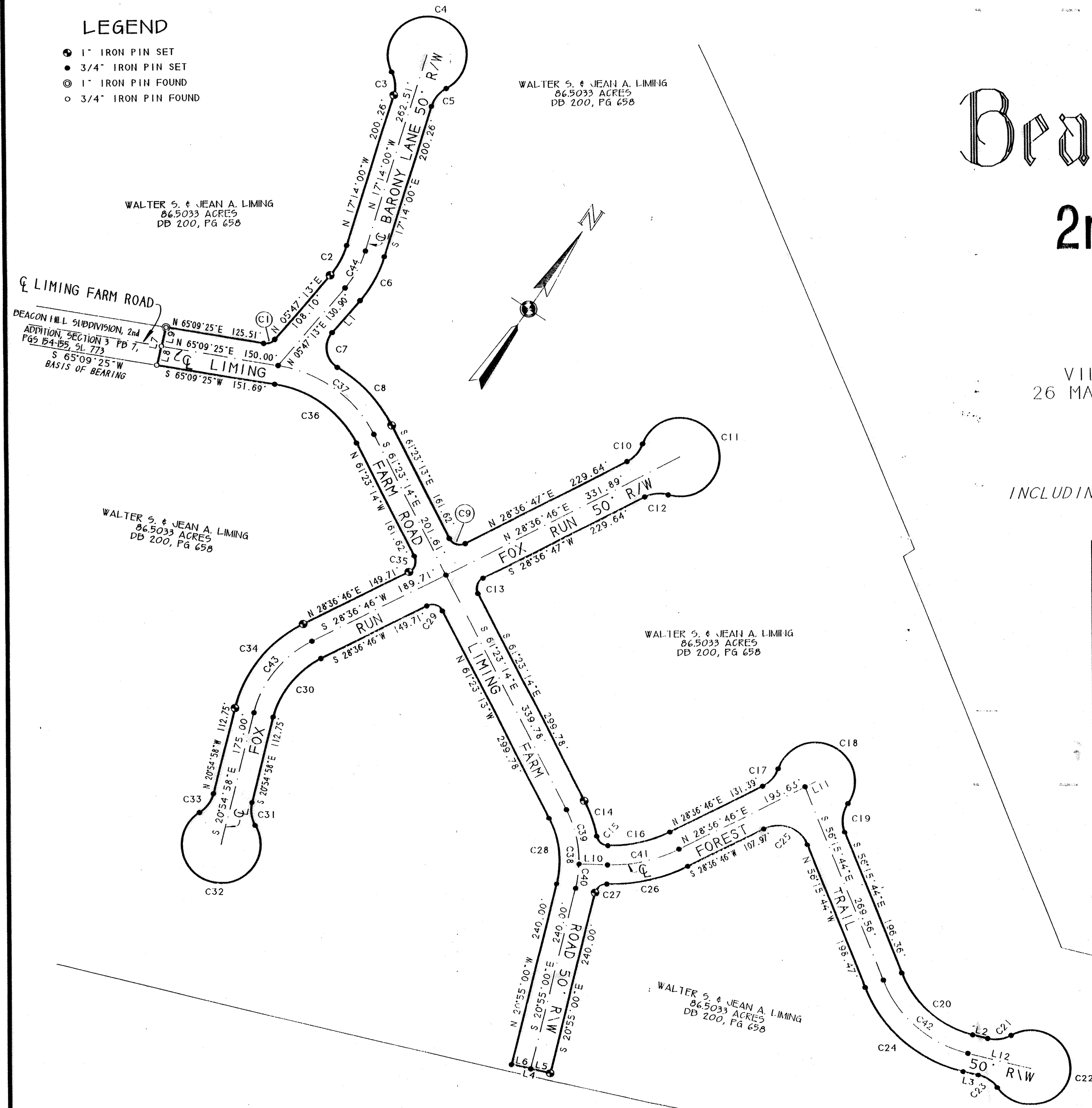


CONTAINING 7.9471 ACRES

INCLUDING A TOTAL OF 4.2598 ACRES CONTAINED IN AREA "C" WHICH IS THE STREETS
 LIMING FARM ROAD, FOX RUN, BARONY LANE AND FOREST TRAIL.

LEGEND

- 1" IRON PIN SET
- 3/4" IRON PIN SET
- ⊙ 1" IRON PIN FOUND
- 3/4" IRON PIN FOUND



CURVE TABLE

C1	R-15.00'	1-59°22'12"	A-15.54'	CH-14.86'	N 35°28'19"E	C23	R-40.00'	1-43°45'42"	A-30.55'	CH-29.81'	N 88°40'27"W
C2	R-110.00'	1-23°01'13"	A-44.20'	CH-43.90'	N 05°43'24"W	C24	R-181.02'	1-54°17'34"	A-171.53'	CH-165.19'	N 83°24'31"W
C3	R-40.00'	1-43°45'42"	A-30.55'	CH-29.81'	N 39°06'51"W	C25	R-40.00'	1-95°07'30"	A-66.41'	CH-59.04'	S 76°10'31"W
C4	R-50.00'	1-267°31'25"	A-233.46'	CH-72.22'	N 72°46'00"E	C26	R-214.97'	1-28°15'56"	A-106.05'	CH-104.98'	S 42°44'44"W
C5	R-40.00'	1-43°45'42"	A-30.55'	CH-29.81'	S 04°38'51"W	C27	R-15.00'	1-77°47'40"	A-20.37'	CH-18.84'	S 17°58'52"W
C6	R-160.00'	1-23°01'13"	A-64.28'	CH-63.85'	S 05°43'24"E	C28	R-124.20'	1-40°28'16"	A-87.73'	CH-85.92'	N 41°09'00"W
C7	R-30.00'	1-97°51'54"	A-51.24'	CH-45.24'	S 43°08'44"E	C29	R-15.00'	1-90°00'00"	A-23.56'	CH-21.21'	S 73°36'46"W
C8	R-192.79'	1-30°41'27"	A-103.27'	CH-102.04'	S 76°43'57"E	C30	R-115.90'	1-49°31'45"	A-100.19'	CH-97.10'	S 03°50'54"W
C9	R-15.00'	1-90°00'00"	A-23.56'	CH-21.21'	N 73°36'41"E	C31	R-40.00'	1-43°45'42"	A-30.55'	CH-29.81'	S 42°47'49"E
C10	R-40.00'	1-43°45'42"	A-30.55'	CH-29.81'	N 06°43'55"E	C32	R-50.00'	1-267°31'25"	A-233.46'	CH-72.22'	S 69°05'02"W
C11	R-50.00'	1-267°31'25"	A-233.46'	CH-72.22'	S 61°23'14"E	C33	R-40.00'	1-43°45'42"	A-30.55'	CH-29.81'	N 00°57'53"E
C12	R-40.00'	1-43°45'42"	A-30.55'	CH-29.81'	S 50°29'38"W	C34	R-165.90'	1-49°31'45"	A-143.41'	CH-138.99'	N 03°50'54"E
C13	R-15.00'	1-90°00'00"	A-23.56'	CH-21.21'	S 16°23'24"E	C35	R-15.00'	1-90°00'00"	A-23.55'	CH-21.21'	N 16°23'08"W
C14	R-174.20'	1-16°03'36"	A-48.83'	CH-48.67'	S 53°21'14"E	C36	R-142.79'	1-53°27'21"	A-133.22'	CH-128.14'	N 88°06'54"W
C15	R-15.00'	1-77°47'40"	A-20.37'	CH-18.84'	S 84°13'28"E	C37	R-167.79'	1-53°27'21"	A-156.54'	CH-150.92'	S 88°06'54"E
C16	R-164.97'	1-28°15'56"	A-81.38'	CH-80.56'	N 42°44'44"E	C38	R-149.20'	1-40°28'16"	A-105.39'	CH-103.21'	S 41°09'01"E
C17	R-40.00'	1-43°45'42"	A-30.55'	CH-29.81'	N 06°43'55"E	C39	R-149.20'	1-28°15'56"	A-73.60'	CH-72.86'	S 47°15'16"E
C18	R-50.00'	1-194°45'48"	A-169.96'	CH-99.17'	N 82°13'58"E	C40	R-149.20'	1-12°12'20"	A-31.78'	CH-31.72'	S 27°00'50"E
C19	R-40.00'	1-55°52'36"	A-39.01'	CH-37.48'	S 28°19'26"E	C41	R-189.97'	1-28°15'56"	A-93.72'	CH-92.77'	N 42°44'44"E
C20	R-131.02'	1-54°17'34"	A-124.16'	CH-119.56'	S 83°24'31"E	C42	R-156.02'	1-54°17'34"	A-147.84'	CH-142.38'	S 83°24'31"E
C21	R-40.00'	1-43°45'42"	A-30.55'	CH-29.81'	N 47°33'51"E	C43	R-140.90'	1-49°31'45"	A-121.80'	CH-118.05'	S 03°50'54"W
C22	R-50.00'	1-267°31'25"	A-233.46'	CH-72.22'	S 20°33'18"E	C44	R-135.00'	1-23°01'13"	A-54.24'	CH-53.88'	N 05°43'24"W

BASIS OF BEARING

AS PER RECORDED PLAT
 PB 7, PGS 154-155, SL 773
 ALL OTHER BEARINGS BASED ON
 ANGLES & DISTANCES MEASURED
 IN THE FIELD

LINE TABLE

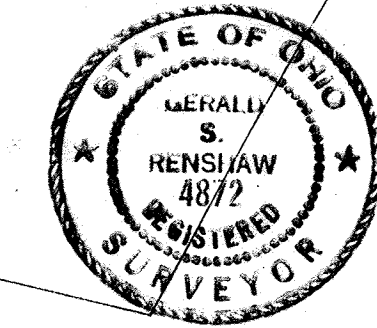
L1	S 05°47'13"W	54.58'	L7	N 20°58'41"W	50.12'
L2	N 69°26'42"E	19.60'	L8	N 20°58'41"W	25.06'
L3	S 69°26'42"W	19.60'	L9	N 20°58'41"W	25.06'
L4	S 69°04'57"W	50.00'	L10	N 56°52'42"E	35.72'
L5	S 69°04'57"W	25.00'	L11	N 28°36'46"E	14.57'
L6	S 69°04'57"W	25.00'	L12	N 69°26'42"E	81.85'

CITATION OF DOCUMENTS

RENSHAW LAND SURVEYING
 4707 ARNHEIM-PAYHILL ROAD
 GEORGETOWN, OH 49121
 TEL. & FAX. 437-370-6645

DEED REFERENCE
 DB 200, PG 658

SURVEYS
 PB 7, PGS 154-155, SL 773



SURVEYOR'S CERTIFICATE

I hereby certify that this Subdivision Plat is a true and complete survey made under my supervision and that all monuments have been set as shown.

Gerald S. Renshaw
 Gerald S. Renshaw, P.S. No. 4872